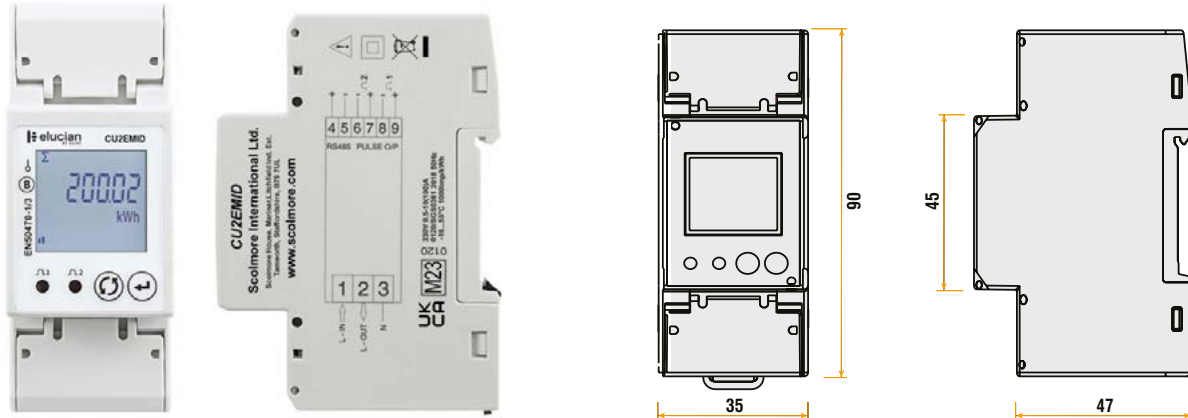


Product Code: CU2EMID

Luckinslive 436045901

Description: 100A Single Phase MID Modbus Multifunction Energy Meter



General Information

Dimensions (mm)	35 (W) x 90 (H) x 47 (D)
Materials	Housing: Self-extinguishing Polycarbonate (UL94 V-0)
Input Terminal Capacity - Rigid (mm ²)	35
Input Terminal Torque (Nm)	0.9 (Terminals 1 to 3)
Output Terminal Capacity - Rigid (mm ²)	2.5
Output Terminal Torque (Nm)	0.4 (Terminals 4 to 9)
Warranty	3

Display

Display Type	LCD, High Definition with White Backlight
Digit Height (mm)	4
Page Scrolling	Manual by front key or auto scroll mode
Displayed Parameters & Accuracies	Voltage: 0.5% of Max. range Current: 0.5% of nominal Frequency: 0.2% of nominal frequency Power factor: 1% of unity (0.01) Active Power: 1% of range maximum Reactive power: 1% of range maximum Apparent power: 1% of range maximum Active Energy: Class B (IEC/EN50470-1/3 / Class 1 (IEC/EN62053-21) Reactive Energy: 1% of range maximum
Energy Display Maximum	99999.99
Resolution	10wh

Programming

Programmable Parameters	Pulse output: (kWh or kVarh) Pulse output resolution Pulse output duration Demand period (for integration) Auto page scroll time Back light time-out period Reset Max. demand Change password Communication Parity: Fixed
Programming Access	Password protected (user selectable)
Memory Reserve	Non volatile memory (EEPROM)





Product Code: CU2EMID

Luckinslive 436045901

Description: 100A Single Phase MID Modbus Multifunction Energy Meter

Input

Operating Voltage Range (V AC)	176 to 276
Voltage Circuit Power Consumption (Max.)	<8
Maximum Current (A) (Imax)	100 (Direct Connection)
Starting Current (mA)	40
Short Time Overcurrent	30 Imax / 10mS (IEC/EN 62053-21 and -23)
Impulse Withstand Voltage	6000
Voltage Withstand (AC)	4kV for 1 minute
Frequency	50
Rated Insulation Voltage (V)	300 (L-N)

Outputs - Energy Pulses

Number of Pulse Outputs	2
Pulse Output Function	1 x 1000imp/kWh 1 x User configurable pulse rate and energy type (kWh or kVArh)
Pulse Output Type	Semiconductor (does not support volt-free operation)
Pulse Output Current (Max)	27mA (Class A to (IEC/EN62053-31)
Pulse Output Voltage Range (V DC)	5 to 27
Pulse Duration	Selectable 60, 100, 200mS
Selectable Pulse Resolution	0.001, 0.01, 0.1, 1

Communication - Modbus Version

Communication Protocol	Modbus
Address	1 to 255
Number of Bits	8
Parity	None, odd, even
Baud Rate (bps)	1200, 2400, 4800, 9600
Required Response Time to Request	≤100ms
Number of Connected Meters	32 (up to 255 with RS485 repeater)
Distance from Master Device (M Max)	1200

Environment

Ingress Protection	IP20
Operational Temperature (°C)	-10 to +55
Storage Temperature (°C)	-20 to +70
Maximum Humidity (%)	85

Standards BS EN 50470-1, BS EN 50470-3, BS EN IEC 63000

Additional Information For cleaning / polishing of products, use only a soft, dry, clean cloth.
100A direct connection.
Tamper Seal (must be fitted to comply with MID).
Installation must comply with MID certified requirements.



Catalogue



Range



DoC



Installation

