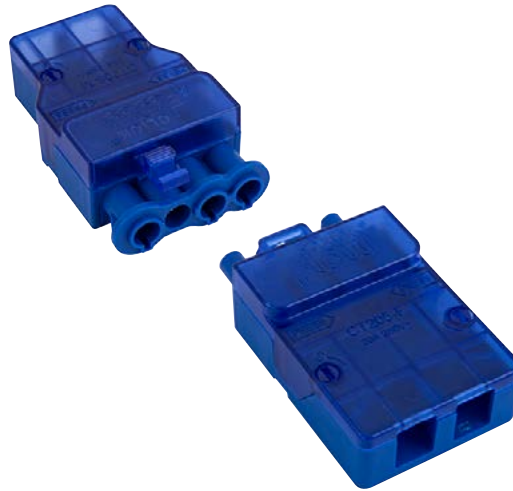


**Product Code:** CT205C

**Description:** 250V~ 20A 4 Pole Complete Push Fit Connector



### General Information

CT205F Dimensions (mm)	79 (W) x 47 (D) x 23 (H)	
CT205M Dimensions (mm)	79 (W) x 47 (D) x 24 (H)	
Minimum Aperture Diameter (mm)	50	
<b>Materials</b>	Cover: Polycarbonate	Base & Terminal Housing: Nylon (PA66)
	Terminals: Silver Plated Brass	Contact Spring: Stainless Steel
Operating Voltage (AC)	250	Frequency (Hz) 50
Resistive Load Rating (A)	20	
Rated Impulse Voltage (kV)	4	
Recommended Inner Core Strip Length (mm)	L & N: 30; E: 38	
Recommended Conductor Strip Length (mm)	12	
Termination Type	Push Fit	
Terminal Capacity - Solid (mm <sup>2</sup> )	2.5 (Max.)	
Terminal Capacity - Flex (mm <sup>2</sup> )	2.5 (Max.)	
Termination Layout (Male)	(CT205M) N - E - L	
Termination Layout (Female)	(CT205F) L - E - N - A	
Cable Entry (Male Left Entry)	CT205M - 2 x 2.5mm <sup>2</sup> Max.	
Cable Entry (Male Right Entry)	CT205M - 3 x 2.5mm <sup>2</sup> Max.	
Cable Entry (Female)	CT205F - 3 x 2.5mm <sup>2</sup> Max.	
Cable Restraint Supplied	Yes	
Ingress Protection	IP20	
Operational Temperature (°C)	-5 to +40	
Warranty (Years)	10	

**Standards** BS EN 61535

### Additional Information

For cleaning / polishing of products, use only a soft, dry, clean cloth. Ensure that the mains supply is isolated before commencing installation. Always refer to the circuit diagram supplied with the relevant product. Bare earth cables must always be covered with appropriate sleeving and wired to the earth terminal. Any dangerous compatibility between different manufactures installation coupler systems is not automatically prevented by compliance with IEC 61535.

Product Code: CT205C

Description: 250V~ 20A 4 Pole Complete Push Fit Connector

## Wiring Example

MALE - CT205M

FEMALE - CT205F

