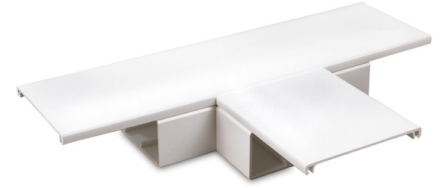


Data sheet

Part No. **MFT WH**

Description formed component as T-piece
 for the installation of maxitrunkings at shallow angles

Colour white, similar to RAL 9010



Standard: EN 50085, BS 4678 Part 4



Working temperature
 -25 to +60 °C

Material
 PVC-U

Art. no.	Width x Depth	Branch width	ps	pl
019 274 MFT 50/50 WH	50 x 50 mm	50 mm	1 pc	25 pc
019 275 MFT 50/75 WH	75 x 50 mm	75 mm	1 pc	20 pc
019 276 MFT 50/100 WH	100 x 50 mm	100 mm	1 pc	12 pc
019 277 MFT 75/75 WH	75 x 75 mm	75 mm	1 pc	12 pc
019 278 MFT 75/100 WH	100 x 75 mm	100 mm	1 pc	8 pc
019 279 MFT 100/100 WH	100 x 100 mm	100 mm	1 pc	10 pc
022 970 MFT 50/150 WH	150 x 50 mm	150 mm	5 pc	-
022 971 MFT 75/150 WH	150 x 75 mm	150 mm	4 pc	-
022 972 MFT 100/150 WH	150 x 100 mm	150 mm	3 pc	-
022 973 MFT 150/150 WH	150 x 150 mm	150 mm	2 pc	-

